

# 30 MN Hydraulic Force Standard Machine

This machine is one of the UK's three hydraulic national force standard machines.

The machine consists of a base casting, incorporating an up-stroking hydraulic ram with a mechanical seal, and an upper casting, incorporating a lockable spherically-seated platen, attached to the base casting by four columns.

The force is applied hydraulically and measured via strain gauges bonded to the four columns, allowing the total applied force to be measured and displayed.



• **APPLIED FORCES**  
600 kN to 30 MN

• **UNCERTAINTY OF APPLIED INCREMENTAL FORCE**  
over full working range

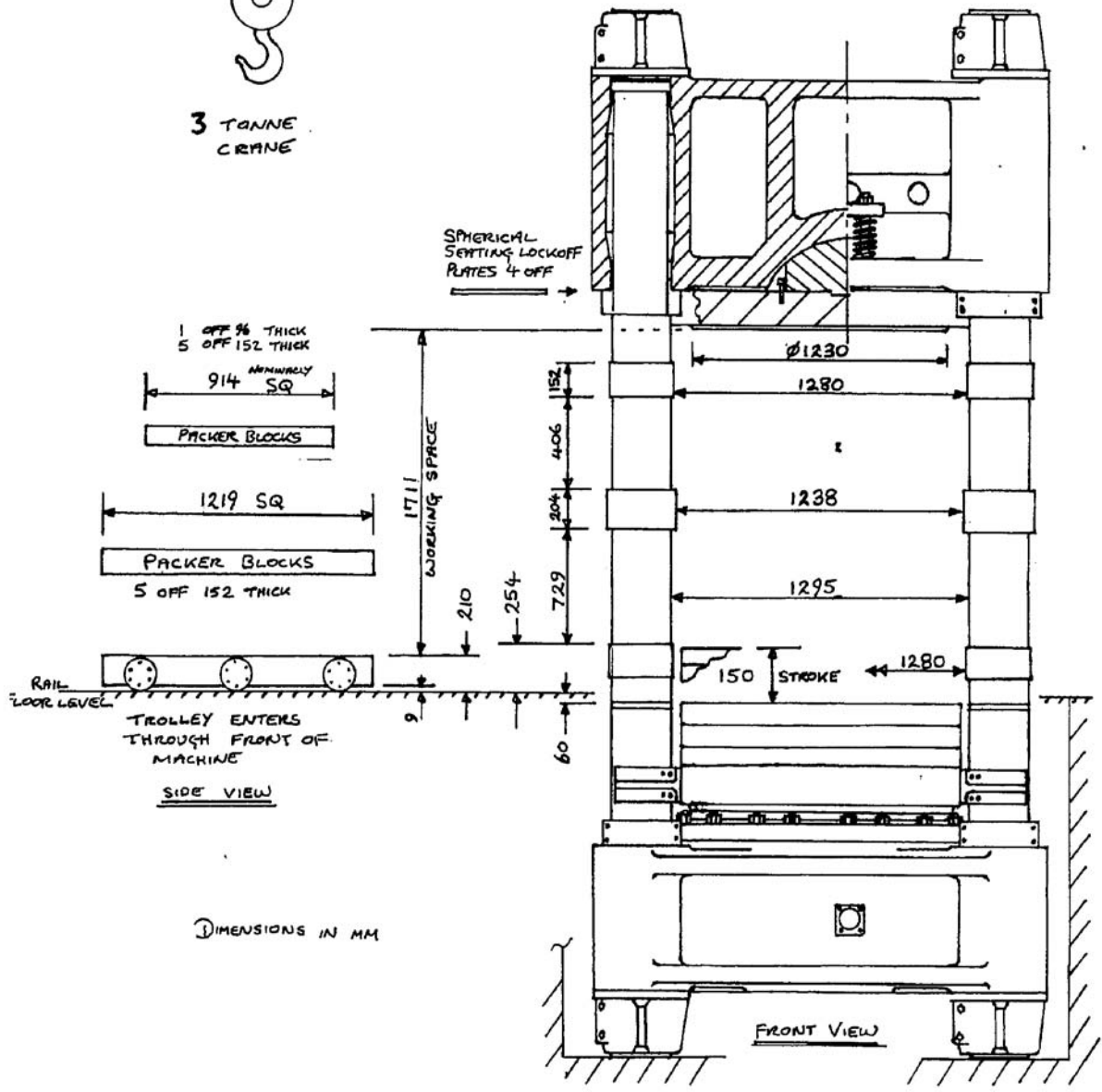
• **MODE OF OPERATION**  
Compression only

• **TYPES OF CALIBRATION**  
BS 8422  
ASTM E 74  
Other relevant procedures

• **MACHINE HIRE WITH EXPERIENCED OPERATOR**  
Testing to customers own procedures  
Compound testing



3 TONNE  
CRANE



For further information or to discuss your requirements, please contact us.

Direct line: 020 8943 6315

Fax: 020 8943 6184

E-mail: [force\\_enquiry@npl.co.uk](mailto:force_enquiry@npl.co.uk)

Internet: <http://www.npl.co.uk/force/contacts>