

# Discussion of the NPL Environmental PTE 2010

????

Chris Gilligan  
NPL Workshop  
20 January 2010

# Contents

- Timetable
- Sample types & Nuclides
- Price
- Workshop / Report
- Questions? Feed back



# Timetable

## 2009 PTE

September 09	Dispatch
01 December 09	Submission of Results
20 January 10	Workshop at NPL
March 10	Final Report

## 2010 PTE

September 10	Dispatch
01 December 10	Submission of Results
26 January 11	Workshop at NPL
March 11	Final Report



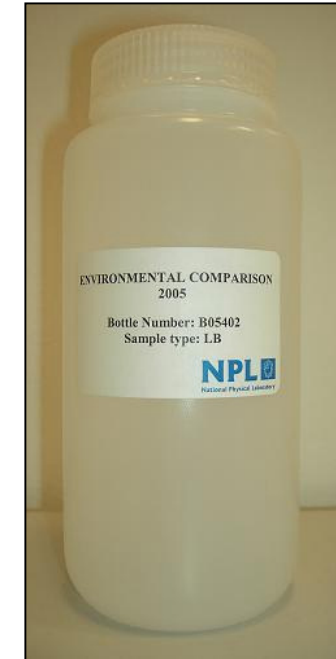
# Sample types

## 2009 PTE

AH & AL	1-20 Bq g <sup>-1</sup>	1-20 Bq kg <sup>-1</sup>
GH & GL	1-20 Bq g <sup>-1</sup>	1-20 Bq kg <sup>-1</sup>
B1 & B2	0.1 - 2 Bq g <sup>-1</sup>	
Synthetic Sand		

## 2010 PTE

AH & AL?  
GH & GL ?  
B1 & B2?  
Synthetic Sand?



# Nuclides

## 2008 PTE

AH & AL	$^{226}\text{Ra}$ , $^{237}\text{Np}$ , $^{\text{nat}}\text{U}$ , $^{238}\text{Pu}$ , $^{239}\text{Pu}$ , $^{241}\text{Am}$ , $^{244}\text{Cm}$
GH & GL	$^{22}\text{Na}$ , $^{60}\text{Co}$ , $^{95}\text{Zr}$ , $^{95}\text{Nb}$ , $^{133}\text{Ba}$ , $^{134}\text{Cs}$ , $^{137}\text{Cs}$ , $^{152}\text{Eu}$
B1(basic)	$^3\text{H}$ , $^{14}\text{C}$ , $^{99}\text{Tc}$
B2(acidic)	$^3\text{H}$ , $^{55}\text{Fe}$ , $^{63}\text{Ni}$ , $^{90}\text{Sr}$
Concrete	$^3\text{H}$ , $^{60}\text{Co}$ , $^{133}\text{Ba}$ , $^{152}\text{Eu}$ , $^{154}\text{Eu}$

## 2009 PTE

AH	$^{226}\text{Ra}$ , $^{237}\text{Np}$ , $^{238}\text{Pu}$ , $^{239}\text{Pu}$ , $^{241}\text{Am}$ , $^{244}\text{Cm}$
AL	$^{232}\text{Th}$ , $^{237}\text{Np}$ , $^{238}\text{U}$ , $^{239}\text{Pu}$ , $^{241}\text{Am}$ , $^{244}\text{Cm}$
GH & GL	$^{60}\text{Co}$ , $^{65}\text{Zn}$ , $^{85}\text{Sr}$ , $^{125}\text{Sb}$ , $^{133}\text{Ba}$ , $^{134}\text{Cs}$ , $^{137}\text{Cs}$ and $^{152}\text{Eu}$
B1(basic)	$^3\text{H}$ , $^{14}\text{C}$ , $^{99}\text{Tc}$ , $^{129}\text{I}$
B2(acidic)	$^3\text{H}$ , $^{55}\text{Fe}$ , $^{89}\text{Sr}$ , $^{90}\text{Sr}$
Synthetic Sand	$^{55}\text{Fe}$ , $^{90}\text{Sr}$ , $^{133}\text{Ba}$ , $^{134}\text{Cs}$ , $^{137}\text{Cs}$ , $^{152}\text{Eu}$

# Nuclides

## 2010 PTE

AH & AL

$^{210}\text{Po}$ ,  $^{226}\text{Ra}$ ,  $^{231}\text{Pa}$ ,  $^{232}\text{Th}$ ,  $^{237}\text{Np}$ ,  $^{234}\text{U}$ ,  $^{235}\text{U}$ ,  
 $^{236}\text{U}$ ,  $^{238}\text{U}$ ,  $^{238}\text{Pu}$ ,  $^{239}\text{Pu}$ ,  $^{241}\text{Am}$ ,  $^{244}\text{Cm}$ ,  $^{249}\text{Cf}$

GH & GL

$^{22}\text{Na}$ ,  $^{60}\text{Co}$ ,  $^{95}\text{Zr}$ ,  $^{95}\text{Nb}$ ,  $^{133}\text{Ba}$ ,  $^{134}\text{Cs}$ ,  $^{137}\text{Cs}$ ,  $^{152}\text{Eu}$

B1(basic)

$^3\text{H}$ ,  $^{14}\text{C}$ ,  $^{36}\text{Cl}$ ,  $^{99}\text{Tc}$ ,  $^{125}\text{I}$ ,  $^{129}\text{I}$ ,  $^{147}\text{Pm}$

B2(acidic)

$^3\text{H}$ ,  $^{41}\text{Ca}$ ,  $^{55}\text{Fe}$ ,  $^{63}\text{Ni}$ ,  $^{89}\text{Sr}$ ,  $^{90}\text{Sr}$

Synthetic  
Sand?

$^3\text{H}$ ,  $^{60}\text{Co}$ ,  $^{133}\text{Ba}$ ,  $^{152}\text{Eu}$ ,  $^{154}\text{Eu}$

# Cost of NPL PTE's



## 2008 PTE

£250 per sample  
£125 participation fee

## 2009 PTE

£295 per sample  
£150 participation fee

## 2010 PTE

£295 per sample?  
£150 participation fee?

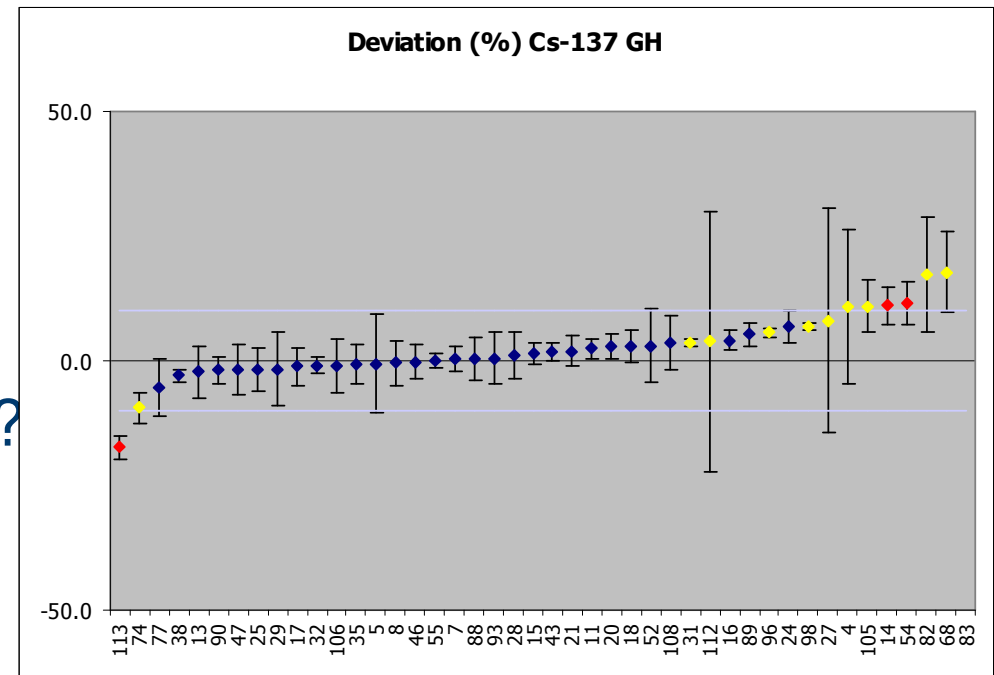
# Workshop For PTE2010

Wednesday 26 January 2011?

Results before the meeting?  
(1 week ok?)

Content of the meeting?  
(more technical presentations?)

Content of the Report?  
(Additional Material?)



# Summary

- Timetable
- Sample types & Nuclides
- Price
- Workshop / Report
- Questions & Feed back please!

