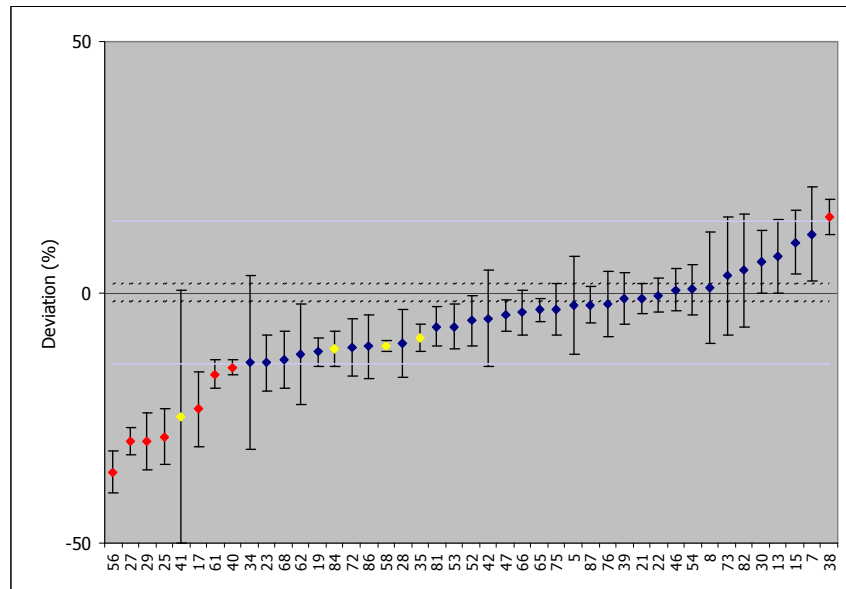


Beta B1 samples 2009



Arvic Harms

National Physical Laboratory

20 January 2010

Radionuclides in B1

4 nuclides:

^3H , ^{14}C , ^{99}Tc and ^{129}I

23 participants and 68 results

B1 composition (Bq g⁻¹)

	NPL	Labs	<i>t</i> -test	Ratio
³ H	1.688(12)	1.713(14)	1.35	1.02
¹⁴ C	0.905(6)	0.958(12)	3.99 D	1.06
⁹⁹ Tc	0.1562(4)	0.153(3)	-1.16	0.98
¹²⁹ I	0.1504(9)	0.1467(25)	-1.40	0.98

Results

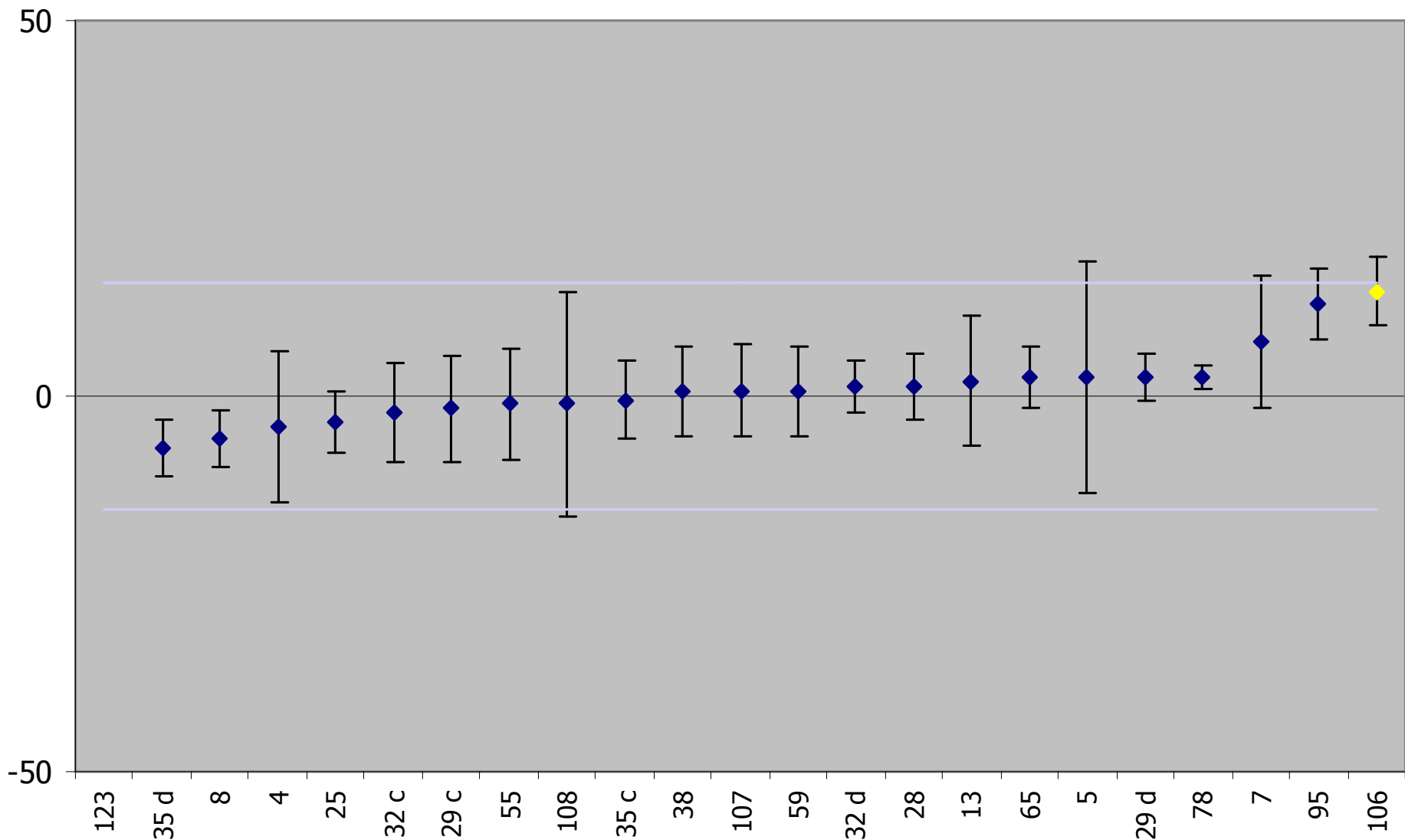
In agreement:

^3H	91%	(71% in 2008)
^{14}C	53%	(55% in 2008)
^{99}Tc	75%	(93% in 2008)
^{129}I	90%	

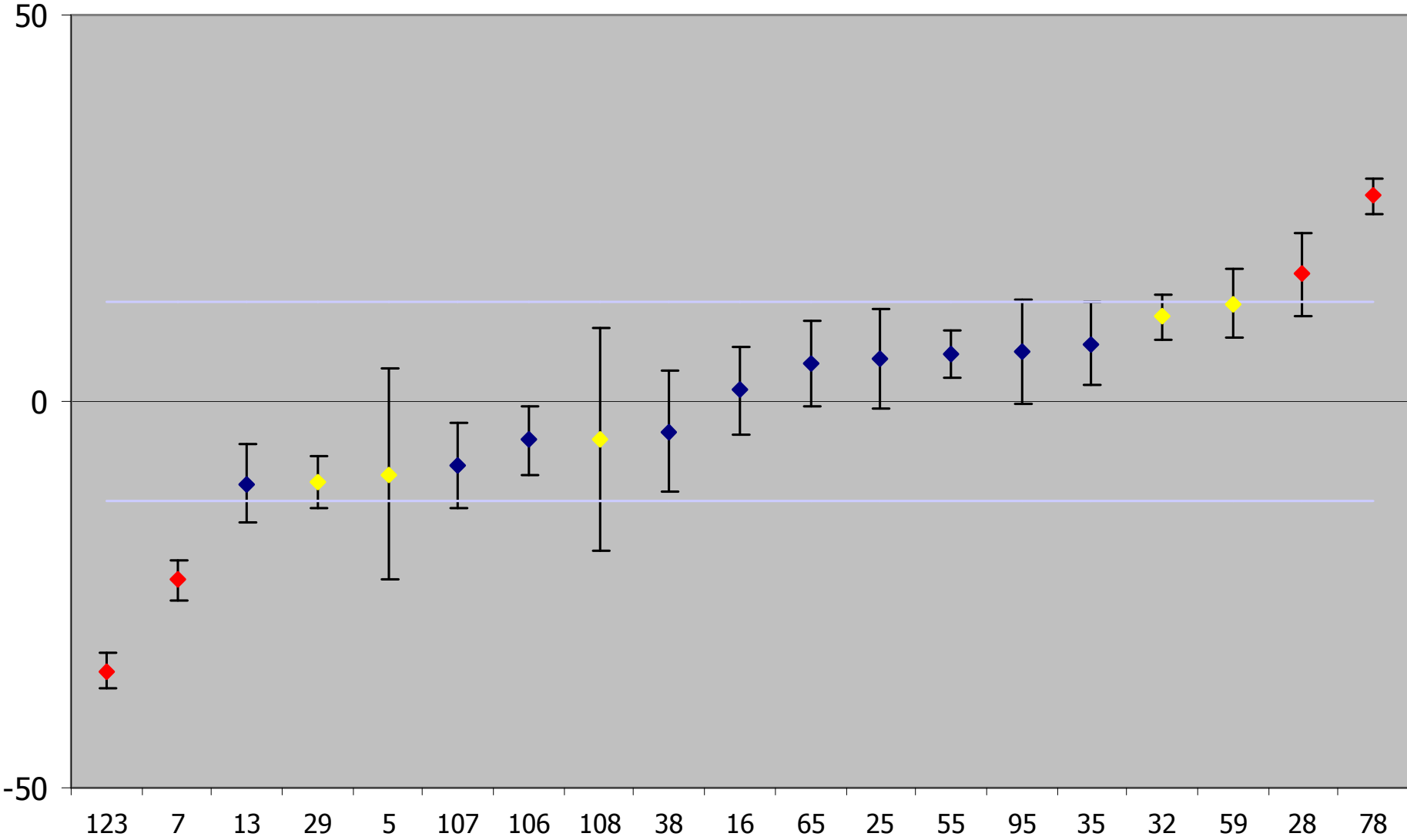
B1 total

76%	'in agreement'
12%	'questionable'
12%	'discrepant'

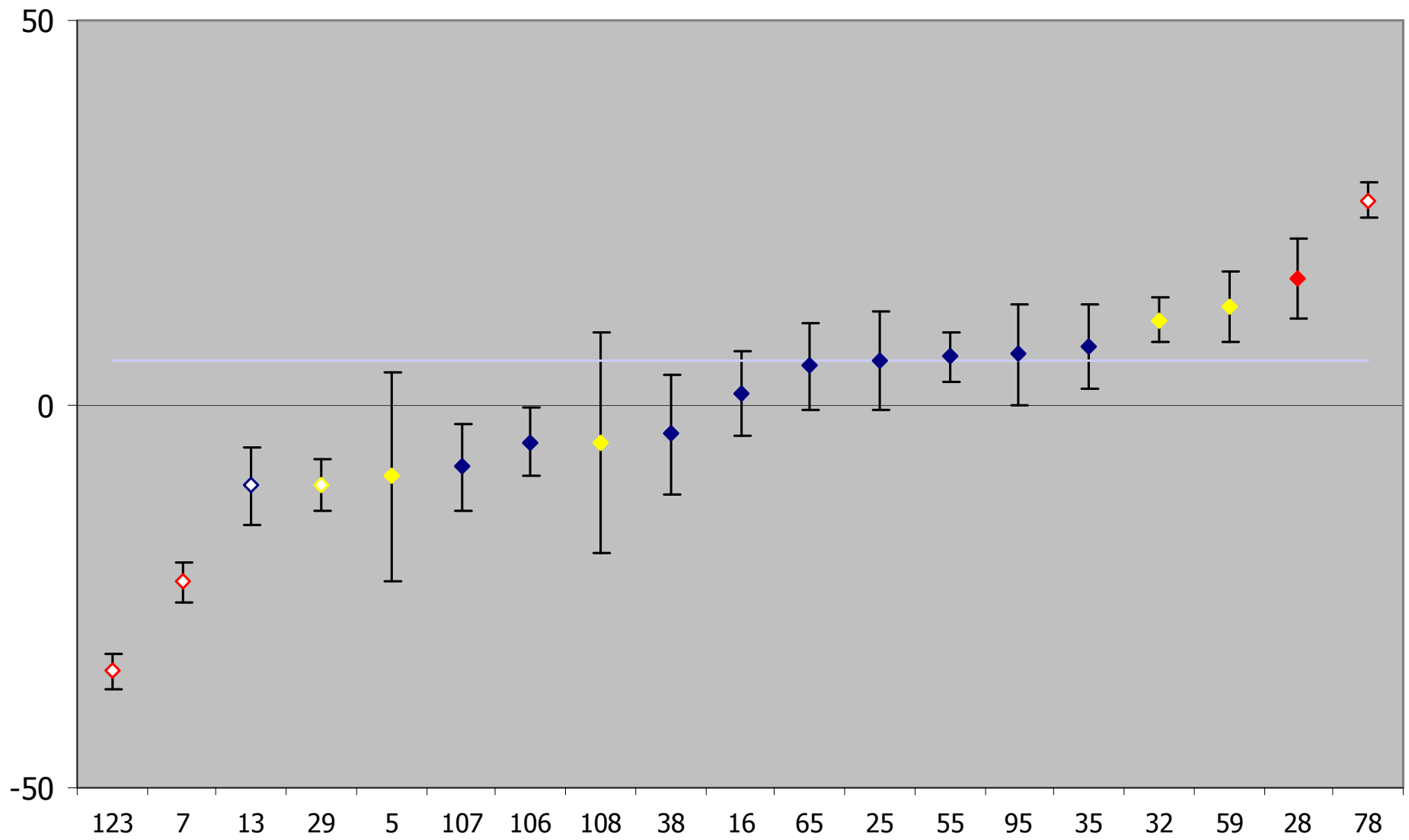
Deviation (%) H-3 B1



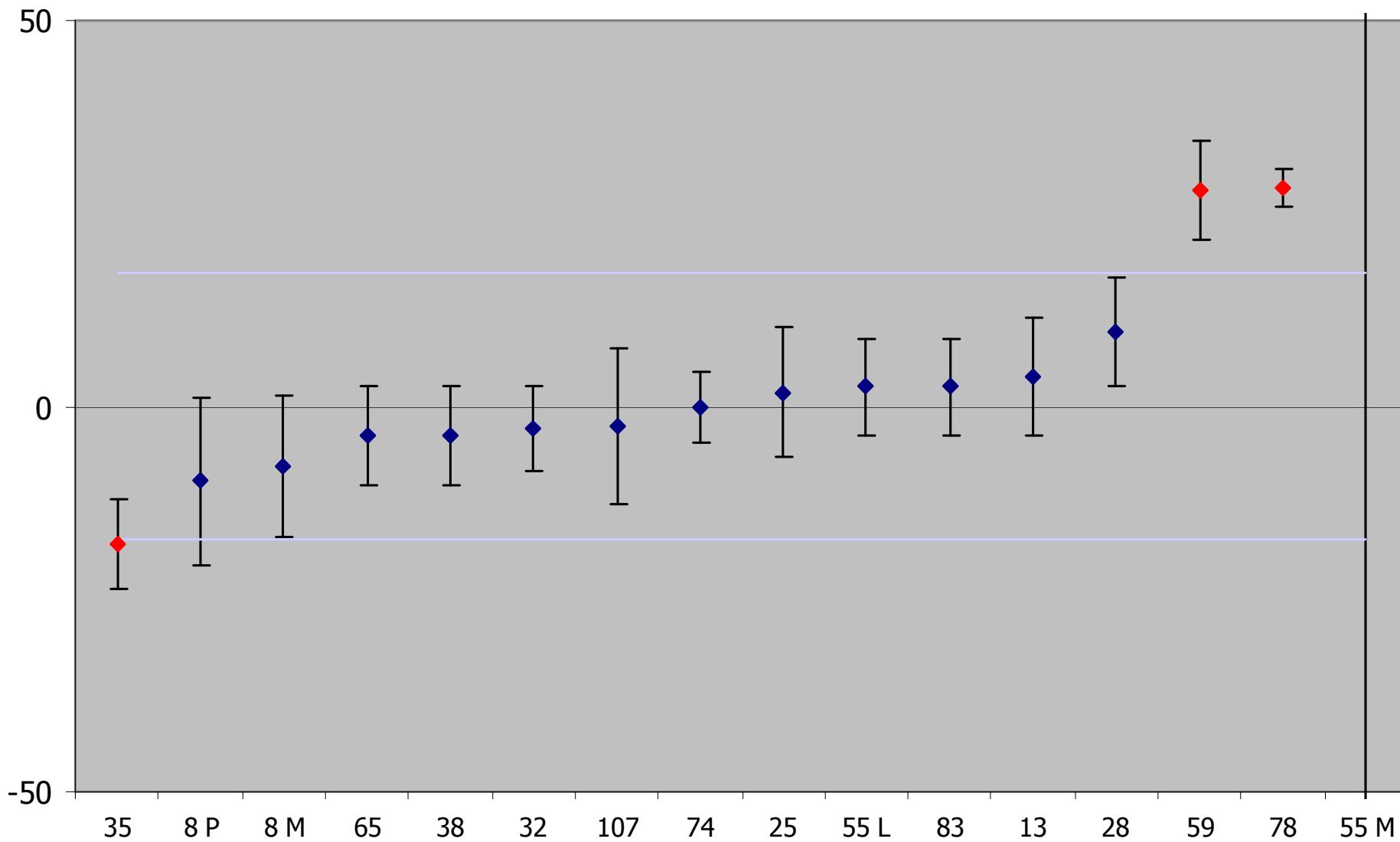
Deviation (%) C-14 B1



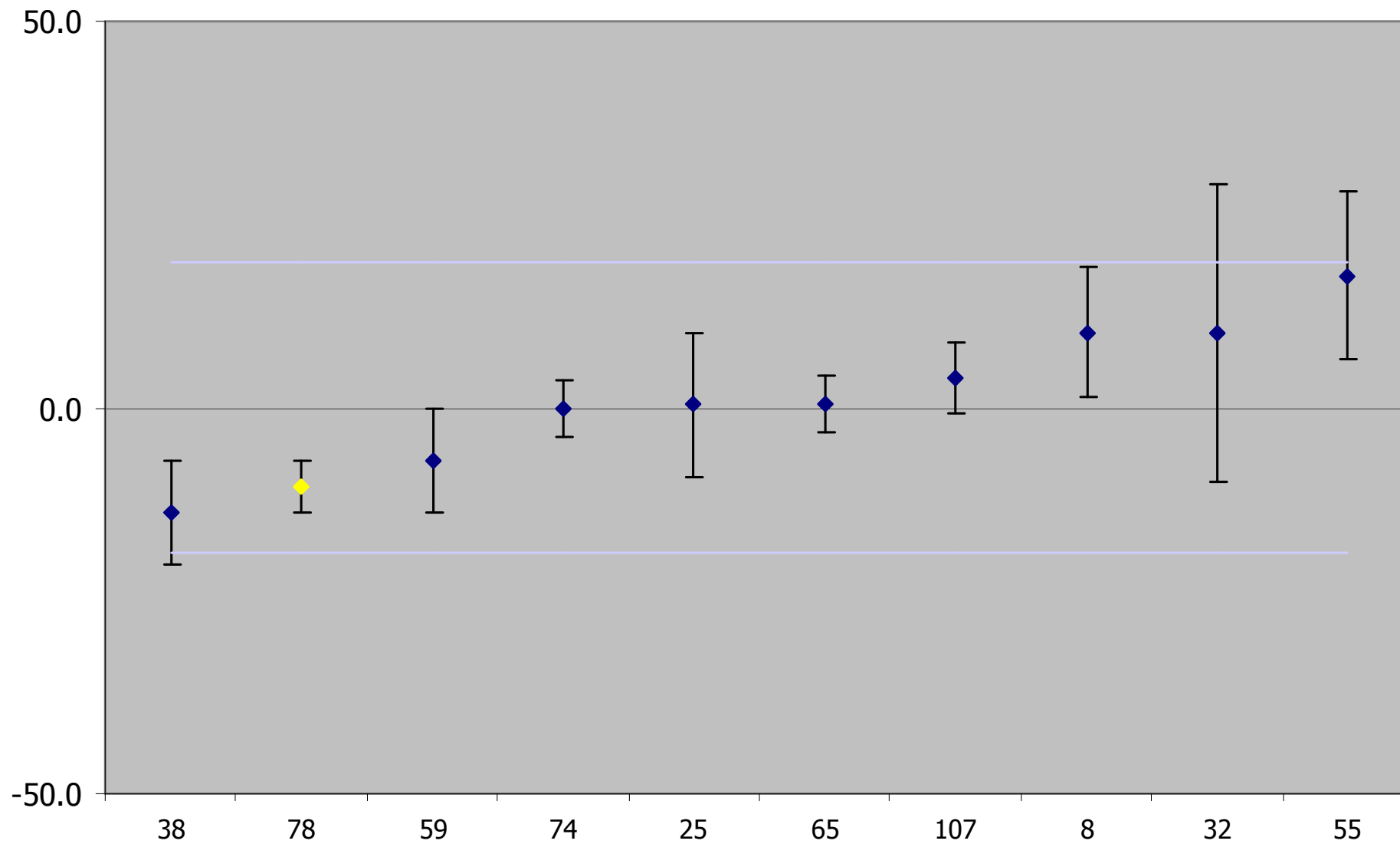
LCS C-14 B1



Deviation (%) Tc-99 B1



Deviation (%) I-129 B1



Thank you