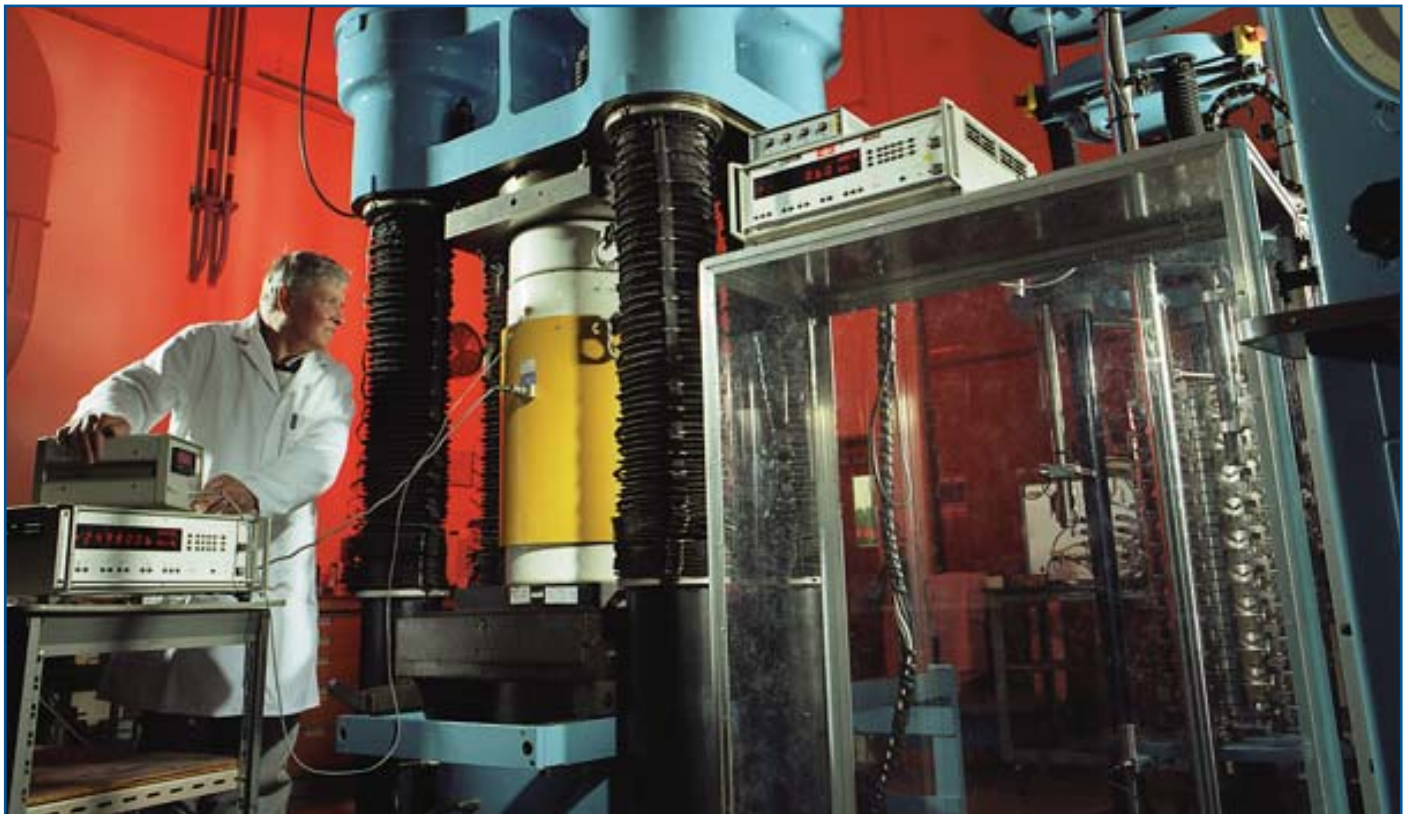


12 MN Hydraulic Force Standard Machine

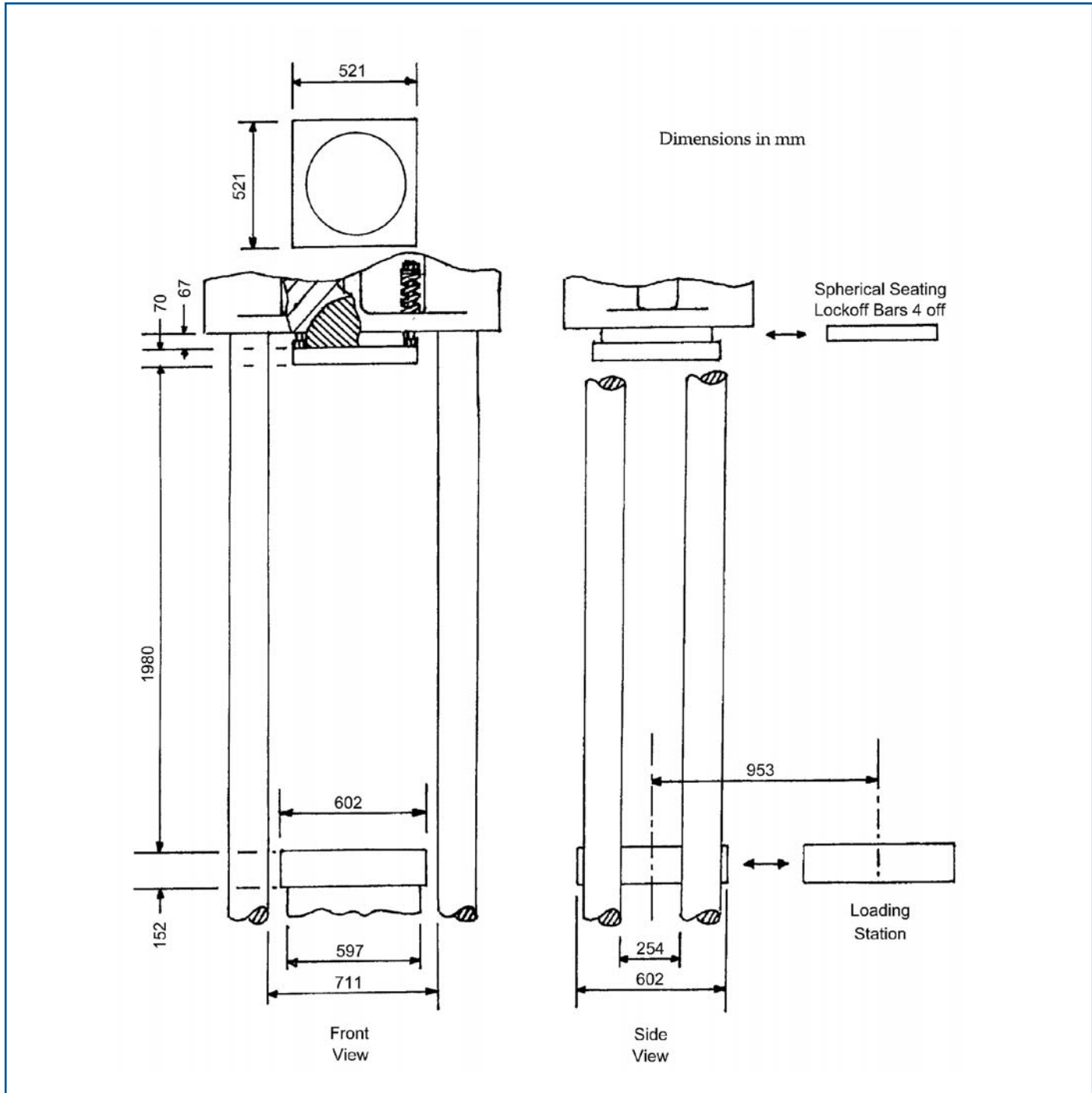


This machine is one of the UK's three hydraulic national force standard machines.

The machine consists of a base casting, incorporating an up-stroking hydraulic ram with a mechanical seal, and a movable upper casting, incorporating a lockable spherically seated platen, attached to the base casting by four lead screw columns.

The force is applied hydraulically via a pendulum dynamometer and measured via strain gauges bonded to the four columns, allowing the total applied force to be measured and displayed.

- **APPLIED FORCES**
400 kN to 10.8 MN
- **UNCERTAINTY OF APPLIED INCREMENTAL FORCE (2004)**
±0.1% from 400 kN to 10.8 MN
- **MODE OF OPERATION**
Compression only
- **TYPES OF CALIBRATION**
BS 8422
ASTM E 74
Other relevant procedures
- **MACHINE HIRE WITH EXPERIENCED OPERATOR**
Testing to customers own procedures
Compound testing



For further information or to discuss your requirements, please contact us.

Direct line: 020 8943 6315

Fax: 020 8943 6184

E-mail: force_enquiry@npl.co.uk

Internet: <http://www.npl.co.uk/force/contacts>